

OVERLAND

RESOURCES

ABN 92 114 187 978



investorseries

YUKON BASE METAL PROJECT

Sofitel Hotel, Melbourne

30 July, 2008

Disclaimer

Important Disclaimer

This presentation (Presentation) has been prepared by Overland Resources Limited (Overland) based on information available to it from them and third party sources. By retaining this Presentation, you (the Recipient) acknowledge and represent to Overland that you have read, understood and accepted the terms of this Important Notice. If you do not accept these terms, you should immediately destroy or delete this Presentation.

This Presentation does not purport to contain all the information that a prospective investor may require in connection with any potential investment in Overland. You should not treat the contents of this Presentation, or any information provided in connection with it, as financial advice, financial product advice or advice relating to legal, taxation or investment matters.

No representation or warranty is made by Overland or any of its advisers, agents or employees as to the accuracy, completeness or reasonableness of the information in this Presentation or provided in connection with it. No information contained in this Presentation or any other written or oral communication in connection with it is, or shall be relied upon as, a promise or representation and no representation or warranty is made as to the accuracy or attainability of any estimates, forecasts or projections set out in this Presentation. No liability will attach to Overland, with respect to any such information, estimates, forecasts or projections.

Overland does not accept responsibility or liability for any loss or damage suffered or incurred by you or any other person or entity however caused (including, without limitation, negligence) relating in any way to this Presentation including, without limitation, the information contained in or provided in connection with it, any errors or omissions from it however caused (including without limitation, where caused by third parties), lack of accuracy, completeness, currency or reliability or you, or any other person or entity, placing any reliance on this Presentation, its accuracy, completeness, currency or reliability.

Overland does not accept any responsibility to inform you of any matter arising or coming to Overland's notice after the date of this Presentation which may affect any matter referred to in this Presentation.

Any liability of Overland, their advisers, agents and employees to you or to any other person or entity arising out of this Presentation including pursuant to the Australian Securities and Investments Commission Act 2001, Corporations Act 2001, Part IVA or V (including sections 51AA, 51AB, 51AC, 52 or 53) of the Trade Practices Act 1974 or any corresponding provision of any state or territory legislation, or similar provision under any applicable law is, to the maximum extent permitted by law, expressly disclaimed and excluded.

The distribution of this Presentation may be restricted by law in certain jurisdictions. Recipients, and any other persons who come into possession of this Presentation must inform themselves about, and observe any such restrictions.

Future matters

This Presentation contains reference to certain intentions, expectations, future plans, strategy and prospects of Overland. Those intentions, expectations, future plans, strategy and prospects may or may not be achieved. They are based on certain assumptions, which may not be met or on which views may differ and may be affected by known and unknown risks.

The performance and operations of Overland may be influenced by a number of factors, many of which are outside the control of Overland. No representation or warranty, express or implied, is made by Overland, or any of its directors, officers, employees, advisers or agents that any intentions, expectations or plans will be achieved either totally or partially or that any particular rate of return will be achieved.

Given the risks and uncertainties that may cause Overland's actual future results, performance or achievements to be materially different from those expected, planned or intended, Recipients should not place undue reliance on these intentions, expectations, future plans, strategy and prospects. Overland does not warrant or represent that the actual results, performance or achievements will be as expected, planned or intended.

Capital Structure and Trading History

Yukon Base Metal Project Acquired

ASX Code: OVR



	No. Shares (million)	% Shares
Directors	10.6	14%
Top 20	54.9	74%
Total Shares	74.0	100%

12 million \$0.20c options on issue
0.375 million \$0.64 options on issue

Substantial shareholders

Singpac International	13.5%
Geologic Resource Partners	9.2%

- Listed on the ASX November 14, 2006
- Glencore International AG strategic partner and substantial shareholder
- Present Market Capitalisation of \$37 million

Who are we - Board and Management



Chairman
Mike Haynes

- Project evaluation and acquisition
- Managing Director Black Range Minerals Limited
- Chairman Genesis Mining Limited and Director Bellamel Mining Limited



Managing Director
Hugh Bresser

- Minerals exploration, Project implementation
- Geologist / MBA
- 10 years with BHPBilliton



Director
Anthony Polglase

- Metallurgy, project management & implementation
- Managing Director Avanco Resources Limited



VP Exploration
Adrian Bray

- Pre-feasibility and feasibility studies
- Quality Assurance and Quality Control

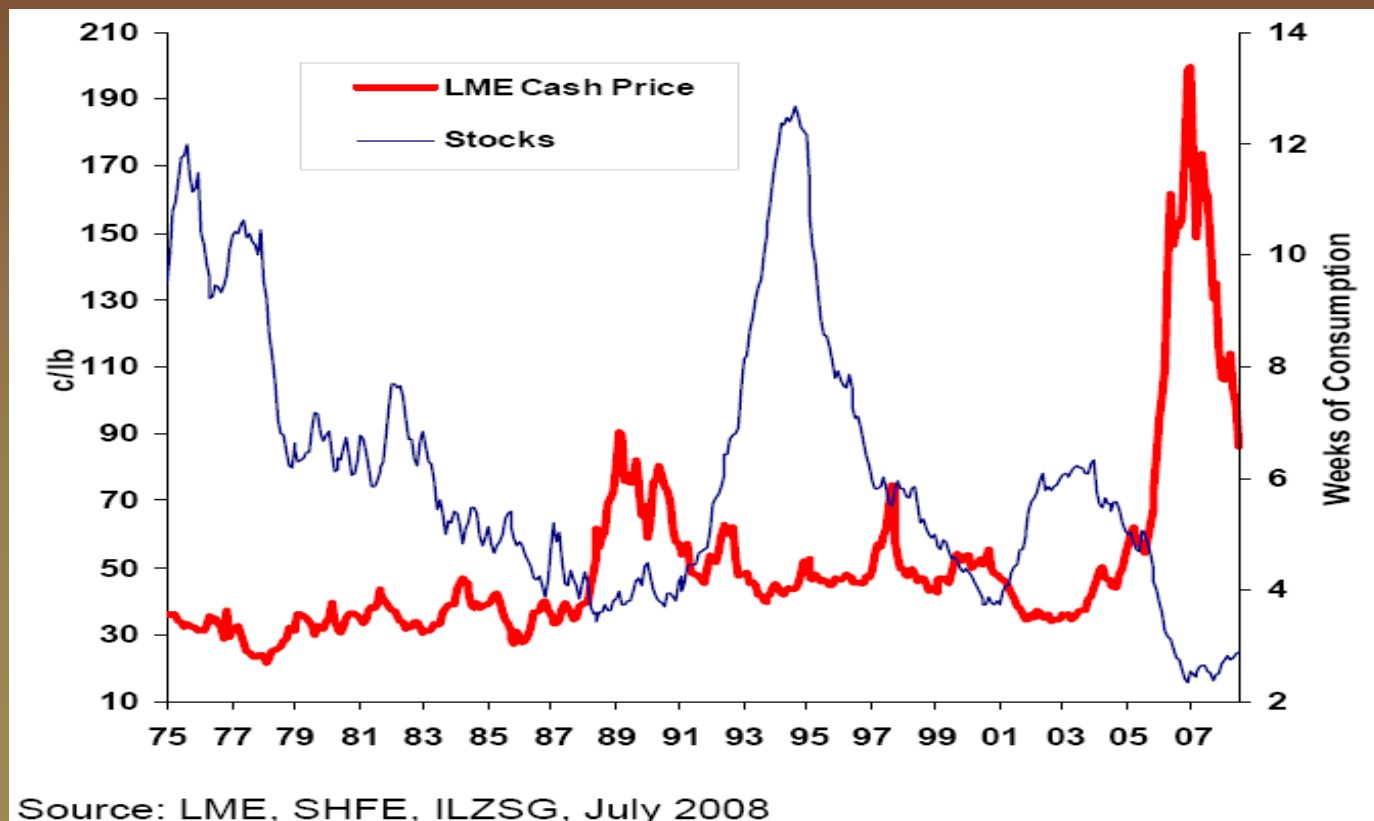
Why Zinc?

- Future demand – timing the cycle

Zinc market supply still at critical levels

Supply forecast not to meet demand by 2011

Long term price appreciation anticipated



Unrealised potential - The Yukon

- Richly endowed base metal belt
- Under explored or limited modern exploration
- Yukon Base Metal Project in newly discovered mineralised area
- Andrew Zinc Deposit
- Outstanding exploration potential
- First mover advantage in this new under explored area
- Long mining history
- Sound and transparent mining law
- Stable government
 - supportive of mining and development



Mineral Resources

- Open and high grade

Mineral Resource

- 5.04 Mt at 10.79% Zn equivalent¹
- 83% in Measured and Indicated categories

Mineral resource remains open along strike and at depth

- Excellent potential to expand the Andrew Zinc Deposit

Classification	Tonnes	Zn (%)	Pb (%)	Ag (g/t)	Ge (g/t)
Measured	88,000	7.2	1.0	4.9	26.3
Indicated	4,100,000	7.7	1.8	5.7	18.5
Inferred	856,000	6.6	1.3	4.1	11.7
Total 3% zinc cut off	5,044,000	7.5	1.7	5.4	17.4



¹ LME Spot prices April 15, 2008,
Zinc US\$2,271/tonne, Lead US\$2,906/tonne,
Silver US\$17.77/oz and Germanium US\$1275/kg

Metallurgy

- The key to a zinc mine

- Exceptional recoveries achieved in laboratory tests
 - 96.1% for zinc
 - 98.5% for lead
- Anticipate recovery rates >90% achievable when in production
- High quality metal concentrates of marketable grades are achievable
- Conventional floatation technology
- Proven low risk technology
- Low Capex and Opex

Concentrate	Recovery (%)		Assay			
	Lead	Zinc	Pb (%)	Zn (%)	Ag (g/t)	Ge (g/t)
Lead	98.5	2.6	63.3	2.6	69.0	8
Zinc	0.8	96.1	0.4	58.0	6.8	131.6



Economic Mining Study Results

- Low cost and robust

- US\$349 million¹ undiscounted cash flow
 - before capital costs, royalties taxes and depreciation
- Capital Cost estimate US\$59.8 million
- Operational Costs US\$79 per tonne of feed
 - Includes delivery to port
 - Equates to US\$0.35/lb of zinc equivalent¹
- 678,000 tonnes of feed per annum
- Initial start up open pit mining schedule
 - 2.9 Mt at 5.9% Zn, 3.3% Pb, 10.1g/t Ag and 27.0g/t Ge
 - Pit expansion and underground potential
- 62,000 tonnes Zn concentrate per annum
- 32,000 tonnes Pb concentrate per annum



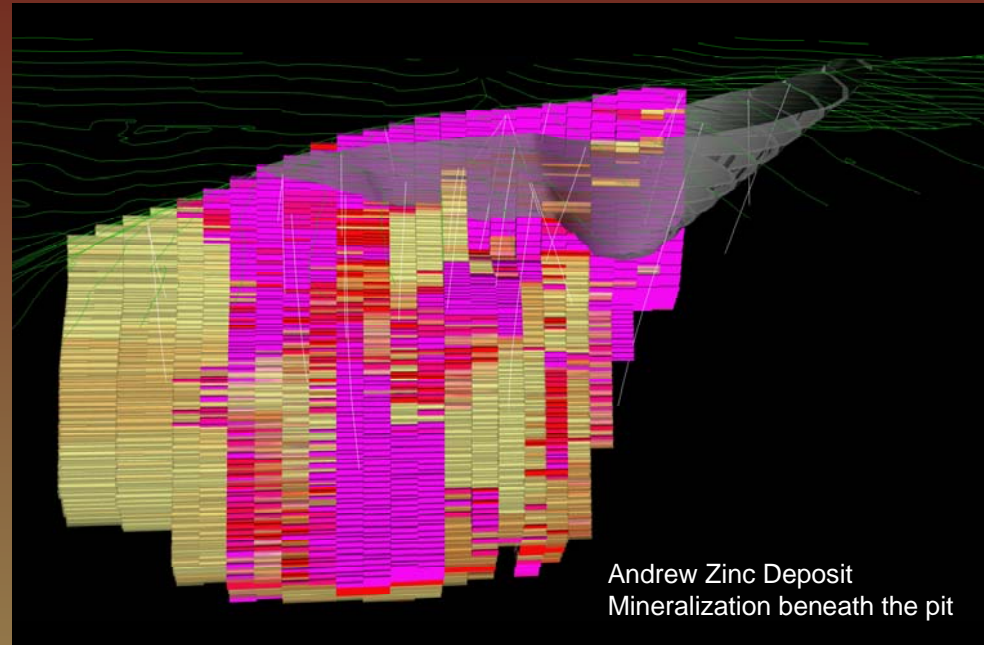
¹ Metal prices Zinc US\$2,500/tonne, Lead US\$3280/tonne no credits for Silver or Germanium

Exploration Update

- Exceptional high grade intersections

Within proposed start up open pit

- 26.7m at 11.0% Zn and 1.4% Pb
- 12.9m at 14.8% Zn and 8.4% Pb
- 17.0m at 14.6% Zn
- 13.0m at 10.4% Zn and 2.3% Pb
- 38.0m at 5.8% Zn and 2.6% Pb
- 25.4m at 5.5% Zn and 4.5% Pb

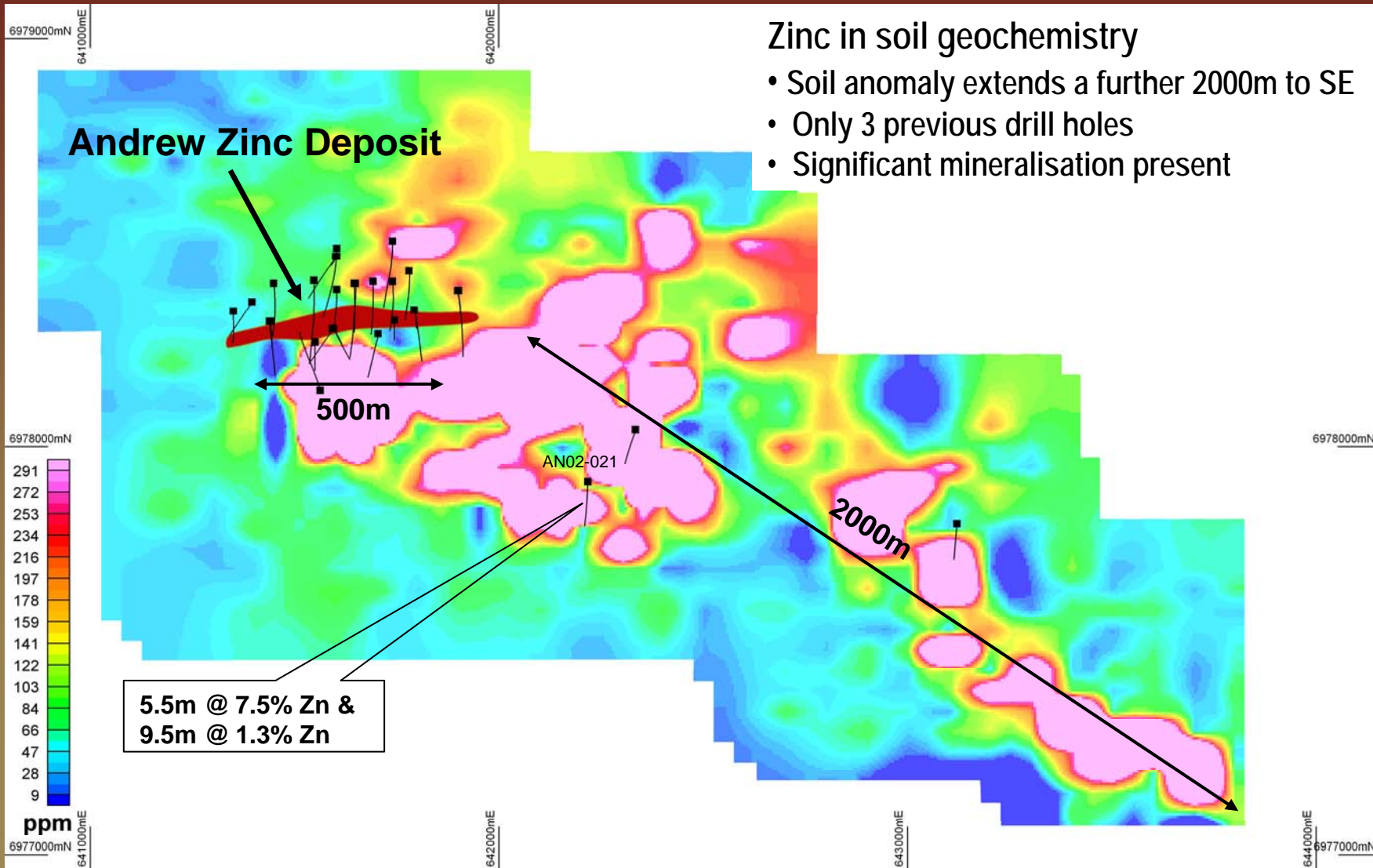


Beyond the proposed start up open pit

- 55.3m at 11.2% Zn and 3.9% Pb
- 36.3m at 8.0% Zn and 6.7% Pb
- 21.2m at 19.6% Zn
- 10.3m at 14.5% Zn and 1.3% Pb
- 30.4m at 7.2% Zn

- Diamond drilling currently underway
- 95 holes drilled for 17,800m
- Final results reported for 48 drill hole
- Analytical results pending for 50 holes

Exploration Targets - Potential for growth



Future - Pathway to production

June Quarter 2008

- Four diamond drill rigs active on the property
- 98 diamond holes completed for 17,800m
- Environmental base line studies underway
- Geotechnical and Hydrogeological commenced
- Detailed metallurgical test work

September Quarter 2008

- Conversion of Resources to Reserves
- Lateral and vertical extensional drill testing
- Drill test advanced prospects
- Expand regional exploration programme

December Quarter 2008

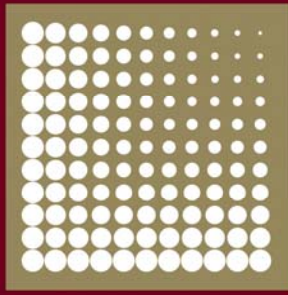
- Continue drill programme
- Feasibility study



Yukon Base Metal Project - Summary

- Andrew Zinc Deposit
- High grade near surface deposit
- Open at depth and along strike
- Open pit mining operation
- Excellent metallurgical properties
- Low CAPEX - low OPEX
- Economically robust
- Access to year round deep water port
- Sound and transparent mining law
- Low sovereign risk
- Aggressive timeline to production





OVERLAND

RESOURCES

Inquires and further information

Hugh Bresser

Managing Director

Phone: +61 8 9226 5566

Email: info@overlandresources.com

Overland Resources Limited has not yet reported any ore reserves from the Andrew Zinc Deposit. While the Company remains optimistic it will report reserves in the future, any discussion in relation to production targets is only conceptual in nature and there has been insufficient work to define a Mineral Reserve and it is uncertain if further work will result in the determination of a Mineral Reserve.

The information in this report that relates to Mineral Resources or Ore Reserves is based on information compiled by Mr Peter Ball who is a Member of the Australian Institute of Mining and Metallurgy. Mr Peter Ball is the Manager of Data Geo. Mr Peter Ball has sufficient experience which is relevant to the style of mineralisation and type of deposit under consideration and to the activity which he is undertaking to qualify as a Competent Person as defined in the 2004 Edition of the 'Australian Code for Reporting of Exploration Results, Mineral Resources and Ore Reserves'. Mr Peter Ball consents to the inclusion in the report of the matters based on his information in the form and context in which it appears.

The information in this report that relates to Exploration Results is based on information compiled by Hugh Alan Bresser who is a Member of the Australian Institute of Mining and Metallurgy. Hugh Alan Bresser is a Director of the company, he has sufficient experience which is relevant to the style of mineralisation and type of deposit under consideration and to the activity which he is undertaking to qualify as a Competent Person as defined in the 2004 Edition of the 'Australian Code for Reporting of Exploration Results, Mineral Resources and Ore Reserves'. Hugh Alan Bresser consents to the inclusion in the report of the matters based on his information in the form and context in which it appears.