



ASX Release

22 February 2007

OVERLAND RESOURCES LIMITED

Level 2 / 675 Murray Street
WEST PERTH
Australia
Tel: +61 8 9226 5566
Fax: +61 8 9226 2027

Contact:

Hugh Bresser
Managing Director

E-mail:

info@overlandresources.com

Tel: +61 8 9226 5566

For the latest news:

www.overlandresources.com

Directors / Officers:

Michael Haynes
Hugh Bresser
Matthew Wood
Timothy Flavel

Issued Capital:

34 million shares

ASX Symbol: OVR

Drilling commenced at the Peel Nickel-Copper Project, NSW

Strike and depth potential to be tested

Prospecting Permit Granted Over Riwaka Intrusive Complex & Drilling Commences at Peel Nickel-Copper Project

RIWAKA NICKEL-COPPER-PGE PROJECT, NEW ZEALAND

Overland Resources Limited is pleased to announce that its Prospecting Permit covering the Riwaka Nickel-Copper-PGE Project has been granted. The Prospecting Permit covers 740km² encompassing the majority of the Riwaka Intrusive Complex in the northern part of the South Island of New Zealand.

The Riwaka Intrusive Complex is a mafic-ultramafic layered sequence with widespread nickel and copper occurrences throughout the complex. Similar intrusive complexes host world class nickel deposits such as Voiseys Bay in Canada and Noril'sk in Russia.

Previous exploration has been sporadic targeted only small areas within the complex. Historical shallow, poorly sited drill holes confirm the considerable potential of the Riwaka Intrusive Complex to host economic Ni-Cu-PGE mineralisation with significant Ni-Cu mineralisation intersected in numerous holes. Better results from previous drilling include:

- 3.7m @ 1.42% Ni and 0.42% Cu from 24m
- 2.6m @ 1.56% Ni and 0.56% Cu from 12m
- 3.1m @ 0.72% Ni and 0.36% Cu from 22m

No exploration has been conducted at the Riwaka Intrusive Complex since the 1980's, and modern geochemical and geophysical techniques have never been systematically applied.

Overland Resources will now commence a systematic exploration and evaluation program aimed at defining a sizeable high-grade Ni-Cu-PGE deposit.

PEEL NICKEL-COPPER PROJECT, NSW

Overland Resources is pleased to announce that drilling has commenced at its Peel Nickel-Copper Project in northern NSW. Significant copper mineralisation from shallow (less than 34m) reconnaissance drilling beneath the Harrisons Cu-Ni Mine has been detailed in historical reports, with results including:

- 20m @ 1.89% Cu from surface
- 7.5m @ 1.62% Cu from 12metres
- 3m @ 0.98% Cu from 3 metres
- 14m at 0.88% Cu from surface

The mineralisation at the Harrisons Cu-Ni Mine is interpreted to remain open along strike and at depth.

The drill program consists of nine holes for approximately 1000m and is designed to validate historical results, test for depth and strike extensions to the mineralisation and test for the presence of mineralisation beneath anomalous copper in soil results obtained from recent field work. It is expected this drill program will be completed within a fortnight.

ANDREW BASE METAL PROJECT, CANADA

Overland Resources recently purchased a 12-month exclusive option to acquire a 90% interest in the Andrew Base Metal Project.

High-grade zinc project

This project includes the high-grade Andrew Zinc Deposit, where Noranda drilled 26 diamond drill holes in 2001-2002. Results from these holes include

- 18.5m at 14.89% Zn
- 27.5m at 12.84% Zn
- 10.2m at 10.98% Zn
- 10.2m at 10.17% Zn
- 6.0m at 12.82% Zn
- 6.8m at 10.78% Zn

The Company is currently calculating a JORC compliant resource which will be released in the near future.

Near-term production potential

While there is considerable potential to substantially increase the resource base at Andrew through further exploration, the high grades and shallow nature of the mineralisation provide the Company with a near-term production opportunity.

Drilling to commence in May/June 2007

The Company has initiated planning and permitting for a drill program scheduled to commence in May/June 2007.

CORPORATE

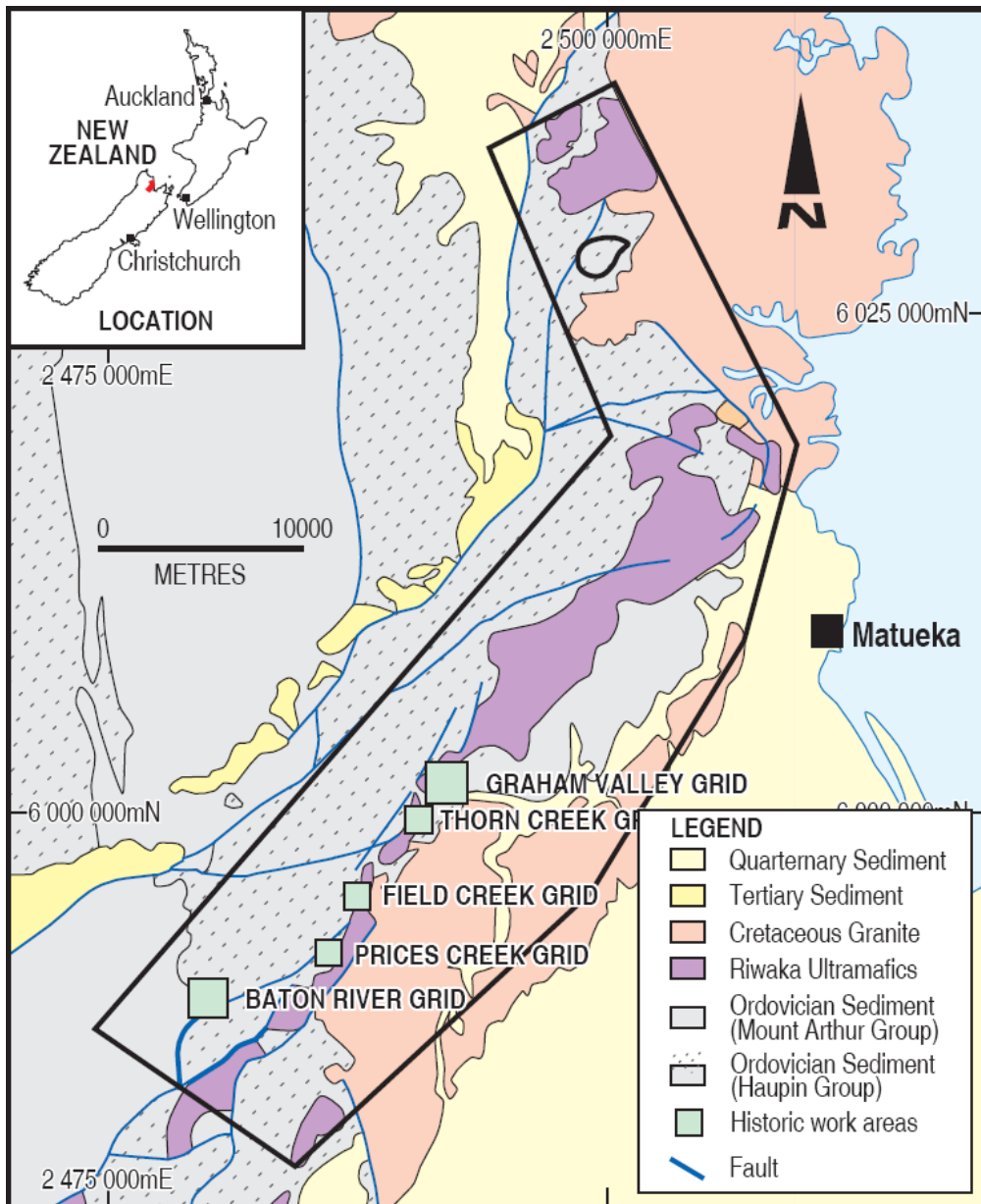
Overland Resources Limited listed on the ASX 14 November 2006.

Overland Resources Limited listed on the ASX on November 14, 2006.

Overland Resources is committed to rapidly becoming a mid-tier resource company through aggressive exploration and development of its existing assets, and through the acquisition of additional quality projects.

Hugh A Bresser
Managing Director

The information in this report that relates to Exploration Results, Mineral Resources or Ore Reserves is based on information compiled by Hugh Alan Bresser who is a Member of the Australian Institute of Mining and Metallurgy. Hugh Alan Bresser is a Director of the company, he has sufficient experience which is relevant to the style of mineralisation and type of deposit under consideration and to the activity which he is undertaking to qualify as a Competent Person as defined in the 2004 Edition of the 'Australian Code for Reporting of Exploration Results, Mineral Resources and Ore Reserves'. Hugh Alan Bresser consents to the inclusion in the report of the matters based on his information in the form and context in which it appears.



Prospecting permit boundary and regional geology of the Riwaka Ultramafic Complex